

AUTUMN 2006

# ECMHA NEWSLETTER

## INSIDE THIS ISSUE:

<i>AGM Report</i>	1
<i>NAHMO AGM</i>	2
<i>Treasurer's Report</i>	2
<i>Wheal Sheba Visit</i>	3
<i>New bridge proposal</i>	3
<i>Renew subs: gift aid</i>	4
<i>Committee matters</i>	4

## Special points of interest:

- ECMHA AGM report
- NAHMO AGM 2007 details
- World Heritage bid
- Lightning strike danger
- Wheal Sheba visit
- Update on proposed bridge at Gunnislake
- ECMHA website planned

www.eastcornwallmininghistory  
association.org.uk

EAST CORNWALL MINING  
HISTORY ASSOCIATION

CHARITY NUMBER 1082887

## FROM THE AGM OF 8 JULY 2006

The chairman, Brian Spencer, and the secretary, Caroline Vulliamy, have worked hard to prepare the Heritage Lottery Fund grant application form to meet the expense of renovating the miners' cottages. This grant can be for sums up to £50000 and the form is awaiting the final touches. To be included are two tenders based on David Scott's specification.

In the meantime, a grant of £4000 has been offered by the Tamar AONB Service from its Sustainable Development Fund, as an indication of partnership in the restoration works. Such partnerships are encouraged by the Lottery Heritage Fund, so this is good news. The money has to be spent by January 2007.



Enjoying tea before the AGM:  
left to right—Brian Spencer, Susan Pittman, Geoffrey Walford and Deri Parsons, the new committee member

## YOU CAN HELP IN THE ATTAINMENT OF GRANTS BY SENDING A LETTER OF SUPPORT

\*PLEASE HEAD THE LETTER 'TO WHOM IT MAY CONCERN' SO THAT IT CAN BE USED IN OTHER APPLICATIONS. \*INCLUDE AN OPENING TO INDICATE YOUR GENERAL BACKGROUND AND THEN \*STATE WHY YOU SUPPORT THE AIMS OF ECMHA. THESE AIMS INCLUDE \*RESTORING THE COTTAGES AND EAST KIT HILL MINE; \*MAKING THEM MORE ACCESSIBLE TO THE PUBLIC THROUGH PRE-BOOKED VISITS; AND \*EDUCATIONAL WORK TO SHOW THE HISTORY OF SOCIAL MINING IN THE AREA..

Please send your letter to the chairman or the editor whose details appear on the back page so that a file of support letters can be compiled.

## WORLD HERITAGE SITE FOR CORNISH MINING BID SUCCESS

Within a week of the AGM, Cornwall learnt that its bid for consideration to become a UNESCO World Heritage Site for Cornish Mining had been successful.

It took from 2002 to 2005 to compile the information for the bid and in a paper presented to the Society for Landscape Studies' Annual conference at Exeter on 22 October 2005, Adam Sharpe gave the following statistics -

- 2886 mine sites
- 38000 mining related features
  - 10000 mine shafts
  - 2244 engine houses
- 908 sites of subsidiary industries supporting mining
- 731 hectares of miners' smallholdings
- 125 new industrial towns, villages and settlements

### National Association of Mining History Organisations AGM 2007 at Morwellham

This will be held at Morwellham over the weekend of 15-17 JUNE 2007 hosted by the Tamar Mining Group, along with the Plymouth Caving Group and other local NAMHO groups which would include our own. For more details visit [www.tamarmining.co.uk](http://www.tamarmining.co.uk) or NAMHO.org website or contact Rick Stewart, Patchway Cottage, Calstock, Cornwall PL18 9QB (01822 832748)

*The importance of the  
Tamar Valley has been  
internationally  
recognised with its  
inclusion in the  
UNESCO Cornish  
Mines World Heritage  
Site bid*

## TREASURER'S REPORT

We started the account period from 6 July 2005 with £6755.24p and finished it on 7 July 2006 with £2857.48p. Total expenditure was ££4341.41p, of which £3036.69p related to the cost of Scott and Company's specification for the restoration of the cottages and £470 was paid to Richard Booth for emergency work on them. Other substantial payments were £519.80p for insurance and £240.88p for a Building Control application. A loss of £3897.76p was made during the period.

A disappointment with regard to income this year was a fall in the grant from the Countryside Stewardship scheme, which is given mainly for management work at the East Kit Hill mine site. This was due to a change in qualifying criteria which worked to our disadvantage.

23 members paid for membership in this accounting period, and with life members the total membership stands at 45. There has been a good response to the Gift Aid forms and a Gift Aid payment will be claimed once the qualifying amount has been reached.

*Kim Tasker*

## VISIT TO WHEAL SHEBA 8 JULY 2005



Brian Spencer (l) and John Viant supervising crossing the stream

A small group met in good weather near New Mill to visit this site, which is half a mile long, but less than one hundred yards wide, in a narrow valley with a powerful stream running through. Needless to say our crossing on a fallen trunk was nothing if not precarious!

We used Kenneth Brown and Bob Acton's *Exploring Cornish Mines*, volume 5 (2001), to find the huge spider wheel pit which served the Kellyhole shaft.

I will largely use Brown and Acton in its description. The wheelpit once contained a 50 foot diameter overshot spider wheel c.1860 (which had thin wrought iron tension spokes). This worked flat-rods running in two directions. The axle-wheel probably carried a crank both sides for each set. 'At the east end of the pit a substantial masonry block once carried a fend-off bob which turned the motion of the flat-rodding from the crank on that side through a right angle to serve Kellyhole shaft.' We continued uphill to find the shaft with a section of flat-rod in situ and a horse whim plat, but the vegetation



Susan Pittman standing in the wheelpit and Elaine Viant (top left) standing on the top of the wall of the fend-off bob house

obscured all. We had all been so intrigued to understand what we had seen that we only had enough time to hurry on to see the count house.

The rest of the Wheal Sheba sett awaits a further visit.



Caroline Vulliamy with Deri & Jan Parsons looking at the count house

*Few British mining fields can claim such a rich and diverse metalliferous mining heritage as the Tamar Valley which has a well documented mining history dating back to at least 1290*

### UPDATE ON PROPOSED NEW FOOTBRIDGE AT GUNNISLAKE

This proposal for a new bridge south of Newbridge came from the Tamar Valley AONB service. Its purpose would be to link the Cornish and Devonshire banks so that new trails could be put in. There were several reservations expressed at the 2005 AGM and it was agreed that a letter be sent expressing our concerns. This was done and subsequently our chairman met with the AONB officers. After further deliberations it has now been learnt that the plan is likely to be dropped.

## AUTUMN 2006

Editor/Membership Secretary  
Mrs Susan Pittman  
27 Old Chapel Road  
Crockenhill  
Swanley BR8 8LL

Phone: 01322 669923  
Email:  
pittman@crockenhill.freemove.co.uk

Chairman:  
Brian Spencer  
9 Crockers Row  
Gunnislake PL18 9DG

Phone: 01822 834294  
Email: brian.spencer@uwclub.net

[www.eastcornwallmininghistoryassociation.org.uk](http://www.eastcornwallmininghistoryassociation.org.uk)

# ECMHA

Peter Cloughton has been awarded a grant to research and investigate medieval silver mining sites in the Tamar Valley and especially to discover where smelting might have occurred. Castle Hill and the Devil's dock at Luckett are high on his list.

## COMMITTEE MATTERS -

Members of the Committee are: Brian Spencer (Chairman), Caroline Vulliamy (Secretary), Kim Tasker (Treasurer), Marcia Randall and Deri Parsons. We are delighted to welcome Deri onto the Committee. At the AGM he volunteered to use his expertise to set up an ECMHA website which will be a great asset.

[www.eastcornwallmininghistoryassociation.org.uk](http://www.eastcornwallmininghistoryassociation.org.uk)

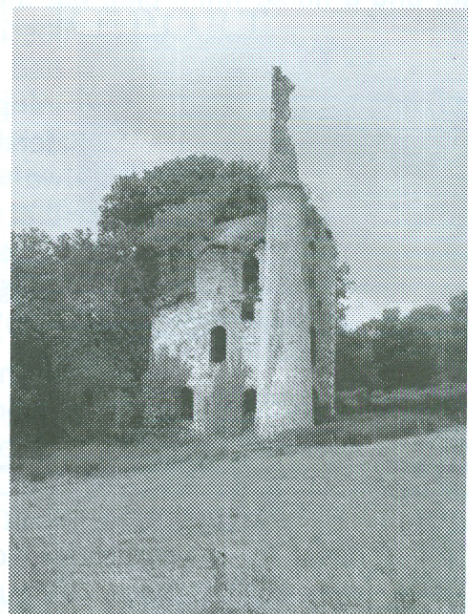
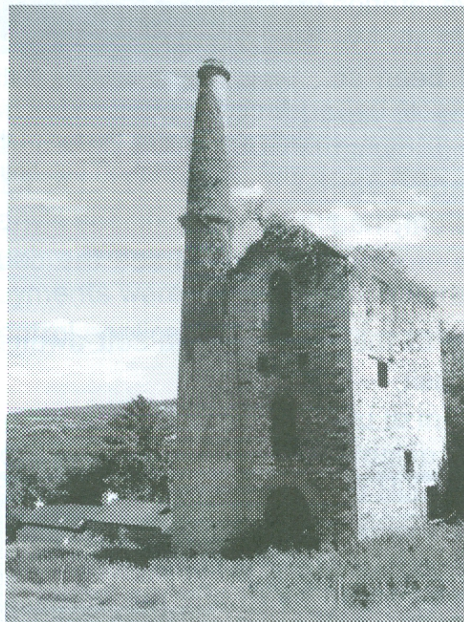
The Committee is small, and so might not always meet the quorum, so **other volunteers are urgently needed.** Please make contact if you would like to find out more or if you are willing to offer your services.

## 2006/7 SUBSCRIPTION

A REMINDER IS ENCLOSED IF YOU HAVE NOT YET PAID £5 FOR 2006-2007. THE SUBSCRIPTION ROUGHLY RUNS FROM AGM TO AGM.

DONATIONS ARE ALSO WELCOME. PLEASE ASK FOR A GIFT AID FORM IF YOU ARE AN INCOME TAX PAYER BECAUSE IT MAKES THE GIFT GO FURTHER.

left: Broadgate engine house on our AGM visit 16 July 2005  
right: Broadgate engine house after lightning strike 2 July 2006



IT WOULD SEEM WE NEED TO GIVE URGENT CONSIDERATION TO FIND FUNDING TO PLACE A LIGHTNING CONDUCTOR ON THE CHIMNEY AT KIT HILL MINE